



MEDICAL GRADE CBD AND HEMP PRODUCTS DESERVE
MEDICAL GRADE TESTING

LABORATORY CERTIFICATION OF ANALYSIS:

Sample Information	
Client ID:	S49AA-0142
Accession ID:	203070003
Sample ID:	Early Pearly
Sample Matrix:	Plant Material - Flower
Date Received:	11/02/20

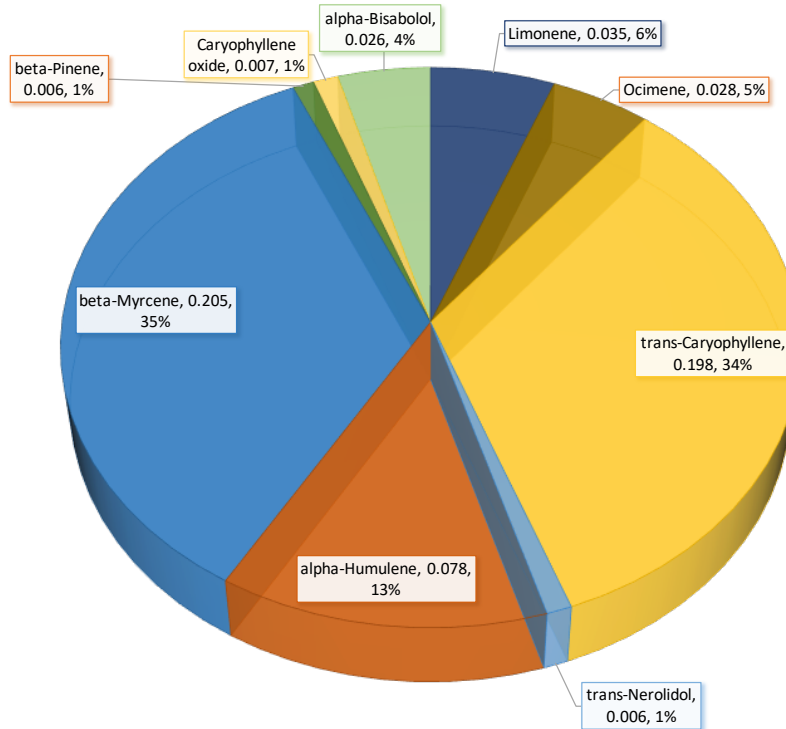
Client Information	
Name / Business	Mount Horeb Hemp
Address:	9658 E Perry Center Rd Mount Horeb, WI 53572
City/State/Zip Code:	
Phone Number:	608.216.5451
Email Address:	mounthorebhemp@gmail.com



Residual Solvent Contamination Analysis	Test Date(s)
	11/6/20

All material is analyzed via GC/MS by sample weight and compared to certified reference standards at known concentrations.

Terpene	LOD (%)	Amount (%)
alpha-Phellandrene	0.005	Not Detected
Fenchone	0.01	Not Detected
gamma-Terpinene	0.005	Not Detected
Geraniol	0.005	Not Detected
Geranyl acetate	0.01	Not Detected
Guaiol	0.005	Not Detected
Limonene	0.005	0.035
Linalool	0.01	Not Detected
Nerol	0.005	Not Detected
Ocimene	0.005	0.028
Pulegone	0.005	Not Detected
Sabinene	0.005	Not Detected
Sabinene hydrate	0.01	Not Detected
Terpineol	0.005	Not Detected
Terpinolene	0.005	Not Detected
trans-Caryophyllene	0.005	0.198
trans-Nerolidol	0.005	0.006
Valencene	0.005	Not Detected
Cedrol	0.005	Not Detected
alpha-Humulene	0.005	0.078
alpha-Pinene	0.005	Not Detected
alpha-Terpinene	0.005	Not Detected
beta-Myrcene	0.005	0.205
beta-Pinene	0.005	0.006
Borneol	0.01	Not Detected
Camphene	0.005	Not Detected
Camphor	0.01	Not Detected
Caryophyllene oxide	0.005	0.007
alpha-Cedrene	0.005	Not Detected
alpha-Bisabolol	0.005	0.026
Isopulegol	0.01	Not Detected
cis-Nerolidol	0.005	Not Detected
3-Carene	0.005	Not Detected
Fenchyl Alcohol	0.005	Not Detected
Hexahydrothymol	0.005	Not Detected
Eucalyptol	0.005	Not Detected
Isoborneol	0.005	Not Detected



Comments:

Notes and disclaimers:

- 1) LOD = Limit of Detection. The lowest quantity of a substance that can be distinguished from the absence of that substance.
- 2) These results relate only to the test article listed in this report. Reports may not be reproduced except in their entirety.
- 3) All results apply to the samples as received. Improper collection of samples can affect the validity of results and is not the responsibility of the lab.
- 4) All Measurements are in Parts Per Million (PPM) unless otherwise stated.

Results Verified By: Josh Smith M.S.

Signature:

Date: 11/10/20